

# Champ-Series

Durable boxes made from cost-effective materials



Reliably forming cardboard and plastic blanks into sturdy packaging units

Our box forming machines turn flat cardboard or plastic blanks into sturdy boxes and can be perfectly tailored to your production needs thanks to modular expansion options. Cardboard packaging is **sealed using hot glue**, while plastic boxes are **welded using ultrasound**.

Both methods can be used individually or combined in a single machine – whatever your production requires can be done. An integrated magazine with a capacity of 30 to 50 blanks ensures that everything stays up and running reliably.

## ✔ What we offer you

**Cost-effective materials can be used**

Transforms cost-effective materials into durable, high-quality boxes.

**Perfect addition to your production line**

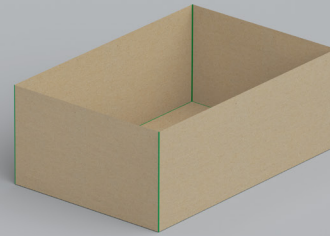
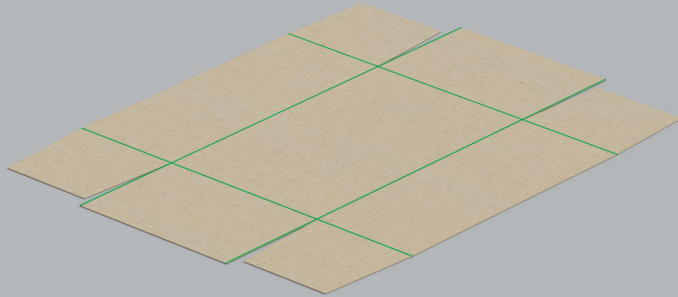
Seamlessly matched with our tube packing machines and can palletizing system.

**Automatic box infeed**

Precisely controlled loading unit ensures seamless and efficient processing in your packing machine.

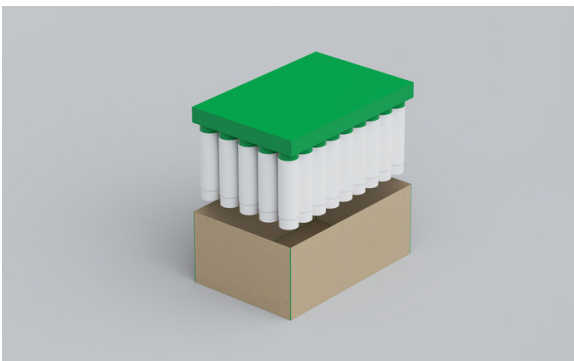
## Technical specifications

	BoxChamp	TrayChamp
<b>Description</b>	Ideally complements our tube packing machines	Ideally complements our can palletizing system
<b>Speed</b> (Boxes per minute)	3	3
<b>Box type</b>	Cardboard box, Plastic box	Cardboard box, Plastic box
<b>Process</b>	Hot melt adhesive sealing (cardboard boxes), ultrasonic welding (plastic boxes)	Hot melt adhesive sealing (cardboard boxes), ultrasonic welding (plastic boxes)
<b>Box dimensions</b>	Min. (LxWxH) 300x300x100mm  Max. (LxWxH) 630x430x230mm	Min. (LxW) 800x1'000mm  Max. (LxW) 1'200x1'400mm



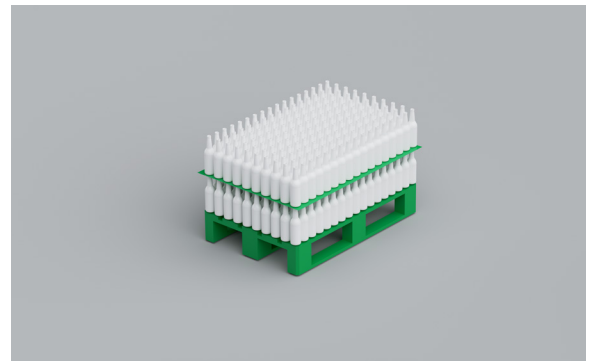
## BoxChamp

The "BoxChamp" integrates seamlessly with our tube packing machine.



## TrayChamp

The "TrayChamp" is the perfect addition to our "CanButler" palletizing solution.



Champ-Series website

Find more information on our website.