

PACKSYS GLOBAL



A Member of Brückner Group

WALDAU

VISITORS GUIDELINE

PACKSYS GLOBAL, THE STORY

Since more than 50 years innovating

Founded in 1969, today's PackSys Global AG has evolved into one of the world's leading manufacturers of high-quality packaging solutions and machines for the cosmetics, beverage, pharma and packing industries.

It all began in 1969

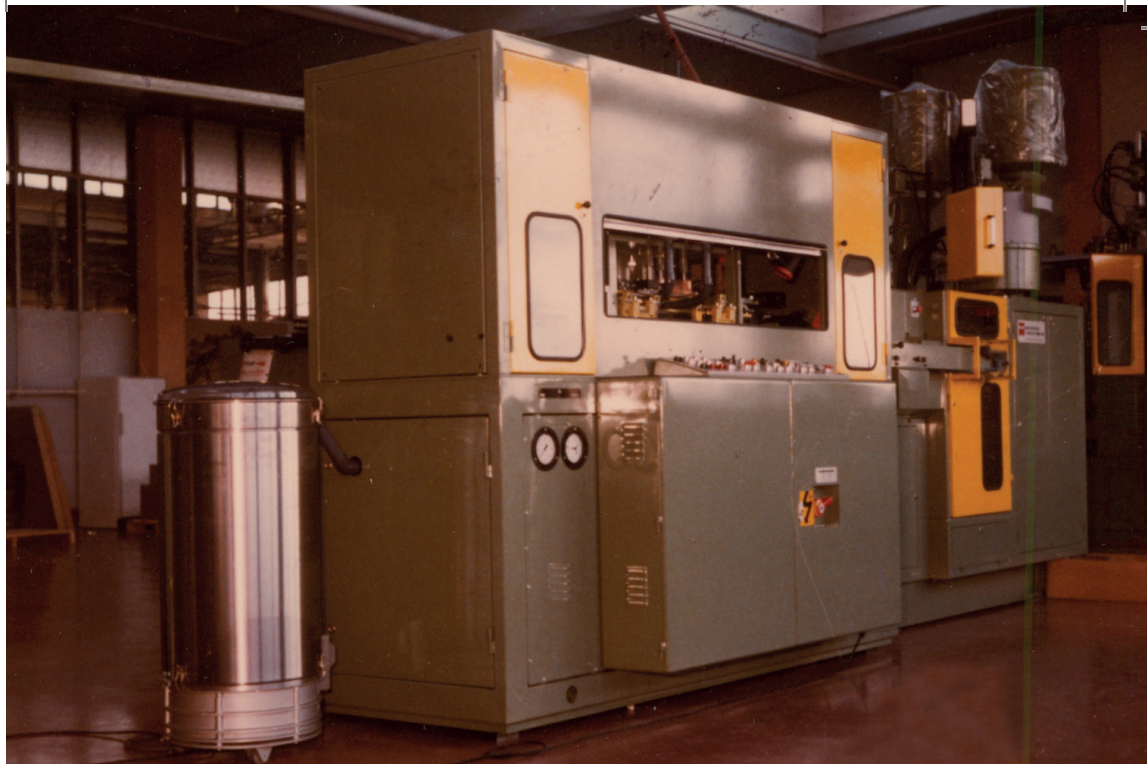
In 1969, under the name KMK Maschinen AG, we started to manufacture machines for laminate and extruded tubes and became known worldwide for our reliable and high-precision machines. Due to the acquisition of the company WESCO (Thailand) in 2001, KMK Maschinen AG extended its product portfolio. From that time on machines, complete lines for aluminum tubes and monobloc aerosol cans lines were part of the product range.

2002 KMK Maschinen AG acquired the Swiss company Oberburg Engineering. Oberburg Engineering brought with them knowledge and long experience of the machinery for metal and plastic caps.

In 2002 the PackSys Global brand was born.

As a result of acquisitions in recent years, the name KMK Maschinen AG no longer suited the company's new, broader product portfolio. In order to continue the steady success of the company, the decision was made to change the name to something more fitting and comprehensive for the industry. Thus the name PackSys Global was born in 2004.

The success of the Swiss company did not go unnoticed, in particular by the Brückner Group, an international, family-owned German company and world leader in its sector. The two companies crossed paths and in 2011, PackSys Global was acquired and became part of the German group, further strengthening its position in the market.



Combining forces

In the following years, PackSys Global's innovation was not only reflected in its machines, but also within the company itself. It was necessary to evolve and for this it was necessary to acquire knowledge in other areas and to grow in order to offer something unique and different to customers.

In 2010 Madag Printing Systems AG, a renowned, Swiss based manufacturer of automatic hot foil stamping machines, was acquired to expand the company's portfolio.

In 2013 PackSys Global AG acquired Texa AG and in 2014 Combitool AG was acquired. With these acquisitions PackSys Global became the only company in the industry making complete lines for laminate and extruded tubes. Our company became the undisputed leader in the industry, offering something that even today no other company can match.

In 2019, PackSys Global decided to sell its subsidiary in Thailand and to focus its core competence in machines for plastic packaging, thus exiting the market for machines manufacturing aluminium tubes and monobloc aerosol cans almost completely.

One company, one brand. The crucial years of change.

During 2020 and 2021 all 4 Swiss companies merged into PackSys Global, thereby creating a much stronger company focused on the continuity of each other's strengths. Texa Packing, now a part of PackSys Global, remains in its original location near Chur (Switzerland) at the foot of the Alps, where it manufactures its machines and sends them all over the world. The R&D team for the company's complete portfolio is based in various locations across Switzerland including an office in Burgdorf (Bern), near the Swiss capital.

All other manufacturing locations were closed by the middle of 2021 and most employees now work under one roof in the new and eco-sustainable headquarters named "Waldau" in Rüti.

Today, we are stronger than ever. We are united and excited to celebrate the inauguration of our new headquarter and the new KREA LAB Center. How? Together with you. We are very glad that you are a part of it.



SWISSTAINABILITY STARTS AT HOME

The Waldau Building

The Waldau building, surrounded by greenery, is the new headquarters of PackSys Global. An ideal place to work where every detail has been taken care of during construction to provide the best conditions for the employees to achieve the highest performance and quality in the design, procurement and assembly of our machines.

An 8,000 square metre site in Rüti has been converted into a truly unique, world-class manufacturing and office location that prioritises the environment in terms of design and sustainability.

It should come as no surprise to anyone, that our architects and interior designers strove to bring nature inside the building to create an ideal working environment in every way.

The design of Waldau and its utilities was firstly done so that it uses as little energy as possible. When we need power it comes primarily from the more than 1,500 solar panels on the roof of the building.

With this state-of-the-art photovoltaic system, we are self-sufficient and generate around 70% of the building's energy needs when working at maximum capacity. During the hours when production is closed, the energy generated by the building is supplied to the city of Rüti.

More than 1960 m³ of concrete (410 tonnes of CO₂) have been saved in the construction of the foundations and the building has been constructed using the innovative CobiX method, one of the best and most eco-sustainable insulation methods on the planet.

In addition, the building uses intelligent lighting and air control to produce a dynamic, energy-saving lighting and air system. It is also equipped with energy monitoring devices to ensure that consumption remains sustainable.

The building has charging stations for bicycles and electric cars completing what is now called: "An eco-sustainable and intelligent building".





THE ASSEMBLY HALL

Invented in Switzerland, made for the world

The assembly hall remains the heart of our building. Here we assemble and test the state-of-the-art machines, which our engineers and designers have created using the latest technologies, before they are shipped all over the world. With more than 4,000 square meters, we have space to assemble and work on our machines in an exemplary manner. Compared to our former headquarters, the area is more than 20% larger than before.

The hall is divided into different parts: The warehouse, the assembly hall, the quality control department and our new technology center, the KREA LAB Center, which also has a laboratory for chemical tests.

On the mezzanine level of the assembly hall our purchasing department is located so as to create an environment for quick feedback from the assembly team.





KREA LAB CENTER

Tailored & swisstainable solutions for your business

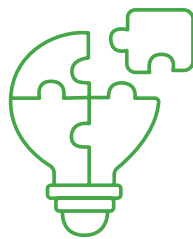
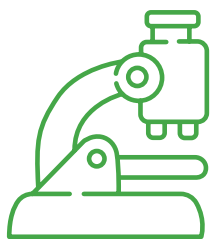
In order to continue with our eco-sustainability strategy in the search for new product solutions, pushing our machines to the limit, and giving the opportunity to people outside our company to carry out their studies, internships or private tests on our machines, we have a new innovation area called KREA LAB Center.

The KREA LAB Center is our technology centre which is divided into two parts: The laboratory for chemical tests, and a private part of the assembly hall which we could call our showroom of machines, as we have all kinds of machines ready to be used only and exclusively in this technology centre.

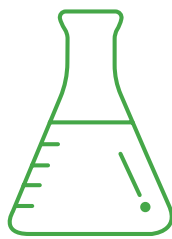
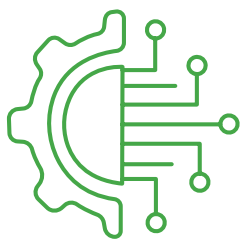
The KREA LAB is a place to create, test, demonstrate and try out any kind of material. A place where our engineers and visitors can enjoy a living laboratory where they can research and develop individually or with our team, new solutions towards a greener planet.

In addition, the KREA LAB has a separate and independent chemical testing laboratory, where materials can be tested, pushed to the limit and, of course, examined before and after their performance on our machines.

Our Swiss-made products are the perfect definition of our work on our path of innovation and quality. It is a living laboratory for our customers and universities where they can research and develop with us new solutions towards a greener planet.



KREA LAB



Our Swiss made products are the perfect definition of our work on our path of innovation and quality, so with the opening of our new HQ, a state-of-the-art centre like this could not be missing to complement our company and also to give our R&D team an even greater opportunity to continue to innovate.

The main goals of our new KREA LAB Center

- Advance our research activities into more sustainable technologies, processes and materials.
- Provide a service to our customers so that they can develop their products in-house and develop different future projects in new and different directions.
- Continue to be the market reference in innovation and research of new technologies & solutions as we have been doing during the last 50 years

Swiss think tank

We have a very large team of professionals working on a daily basis in our R&D department looking for every opportunity to reach the needs of our customers, our clients and to follow the path on the innovation that PackSys Global has created during the past 50 years. Our company is a symbol of innovation on the market. We were the first and only packaging machine manufacturer to bring a complete tube line to the production plants.

The quality of our machines & technologies, which we deliver successfully all over the world, is our hallmark and our driving force. The team is focused and sure that the impossible can be transformed with the constant nurture ideas, experience and expertise our international team.



OUR OFFICES

A healthy work environment

Health and well-being play an important role in our company. That's why we offer ergonomic workstations, different meeting spaces, a creative room, a relaxation room and even a gym for exercising between working hours.

Meeting (room) Switzerland

Our meeting rooms have names like Matterhorn, Lucerne and Lac Léman. Why? Because, we love the clean, organized country where we live. Switzerland has much more to offer than watches, cheese and chocolate. Majestic Alps. Scenic nature. Fresh air. Pure Water. Lush flora. Magnificent views. Sparkling glaciers. Buzzing cities. Medieval villages. Palm-lined lakeshores. Snow covered peaks. The landscape of Switzerland is more varied than almost any other place on earth. That is why we decided to name our meeting rooms like famous Swiss mountains, towns, regions and lakes. Please, take a trip through our meeting rooms and discover pictures from the most beautiful places in Switzerland.



Nature in walking distance

The new building surrounded by nearby green meadows and cooling forest gives our employees the great possibility to engage in sport activities in nature or spend their breaks outside the building. After work or during free time the adventure playground that is Switzerland is waiting just outside the doors. All villages and towns are easy reachable by foot, bike, train, bus or car in a short time.

Sustainable and clean

On the first 7 months in our new building, we have saved more than 60 tons of paper by using a clean desk policy. Every single step counts, and we are aware of it.

The lungs of our office

Surrounding the open-plan office where the ergonomic workstations of the various departments are located, there is a unique place of relaxation and light: the atrium.

It is the lungs of our new headquarters. With its trees and plants, it offers our employees a place to relax and get fresh air during their working hours and also provides natural light no matter where our employees are located. This not only provides an extra green area inside the building, but also a view of the outside no matter where you are working.

With this new atrium, we make a difference in design not only on the outside, but also on the inside of the building.



OUR SHOWROOM

The “hall of fame” where everyone wants to end up

Our new, spacious and exquisite showroom in Waldau is a catwalk for the most famous products from the world of cosmetics, health and pharmaceuticals, as well as drinks and specialty brands.

All the packaging of famous brands such as L'Oréal, Nivea, Estée Lauder, Johnson & Johnson, Garnier, Colgate, Coca Cola and Valser among many others are there to show our visitors products manufactured or handled by our machines that they can encounter in their daily lives.

The comfortable room shows perfectly made tubes, closures and products such as bottles, masks, perfumes or closures.

All these branded packaging products are manufactured on our own PackSys Global machines. Surely is our showroom one of the most spectacular new places in our building for the visitor.

Customer Service

Reliable and tailored to your needs.



SWISSTAINABILITY STARTS AT HOME

More committed than ever

Our company is now more than ever involved in caring for the environment and doing our utmost to contribute to a better world.

We are aware that working with a material such as plastic is not at first sight “welcome” but it is also true that without plastic we would not be able to preserve many things that are necessary in our day to day.

It is not the plastic itself, it is we who are responsible for recycling and reusing it in an appropriate way.

In our company we are always looking at ways to reduce it and our engineers have a responsibility to design technologies that help the environment.

This year we are publishing our sustainability report together with the Brückner Group, of which we are part, and also with the highlights in which our company is working in the area of sustainability.

As we always say, “Swisstainability starts at home”, we cannot go out and promote something as serious as this without being consistent in our own house and that is why with our new building we are proud to say that we are more eco-sustainable than ever in all aspects.

Be Swisstainable



VISITOR INFORMATION

Do's, don'ts and safety rules

Entering the assembly hall and warehouse is only allowed in the company of an authorized person.

You enter the company premises at your own risk. Please observe the mandatory signs.



Don't leave your group and stay close to your guide.



No access to the assembly hall for people with a pacemaker.



Smoking, open flames and fire is strongly prohibited on the factory premises.



Equipment and products should not be handled without consent from the technician.



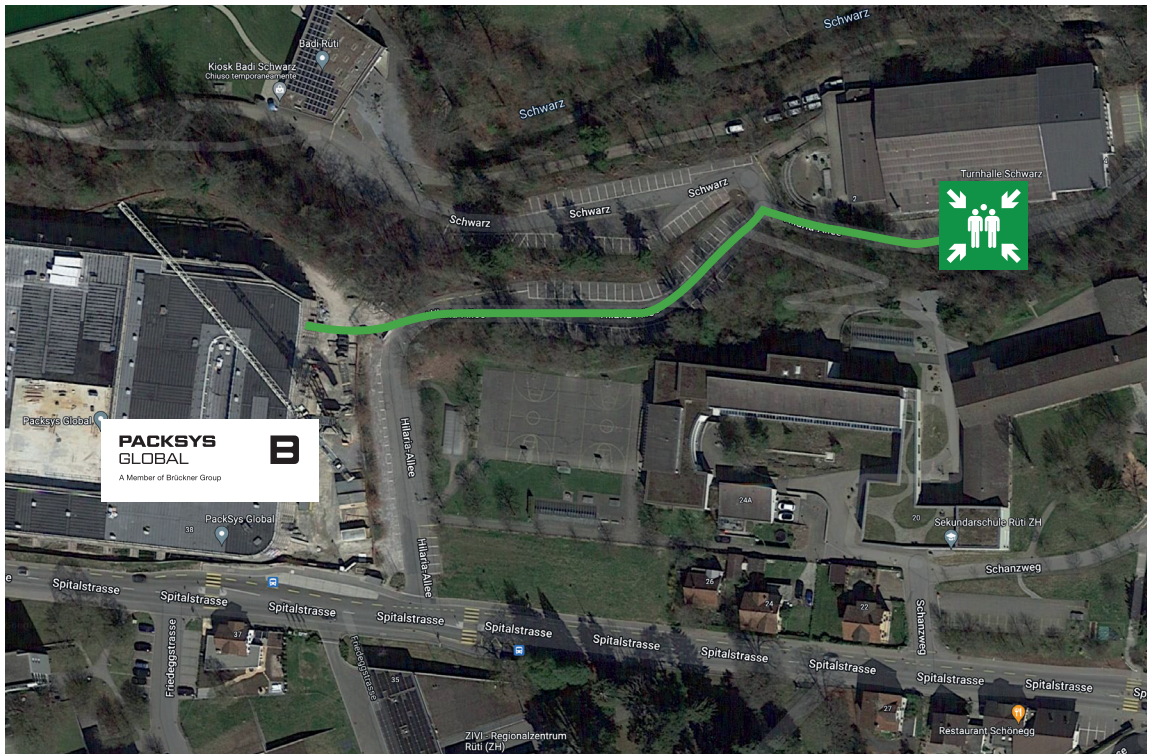
It is forbidden to take photographs on the premises.



In case of emergency.

Keep calm. Give first aid.

Call 144 in case of an accident and 118 in case of a fire.



Meeting point in case of emergency



PackSys Global AG

Spitalstrasse 38
8630 Rüti
Switzerland

T +41 55 253 3700
www.packsysglobal.com
info@packsysglobal.com

Service Center 24/7 hotline +41 55 253 3838



THANKS FOR YOUR VISIT